

# **Update on the Recent Key Stage and Examination Outcomes**

**Children's Services Scrutiny  
Committee**

**Tuesday, 8 November 2011**

Working for you

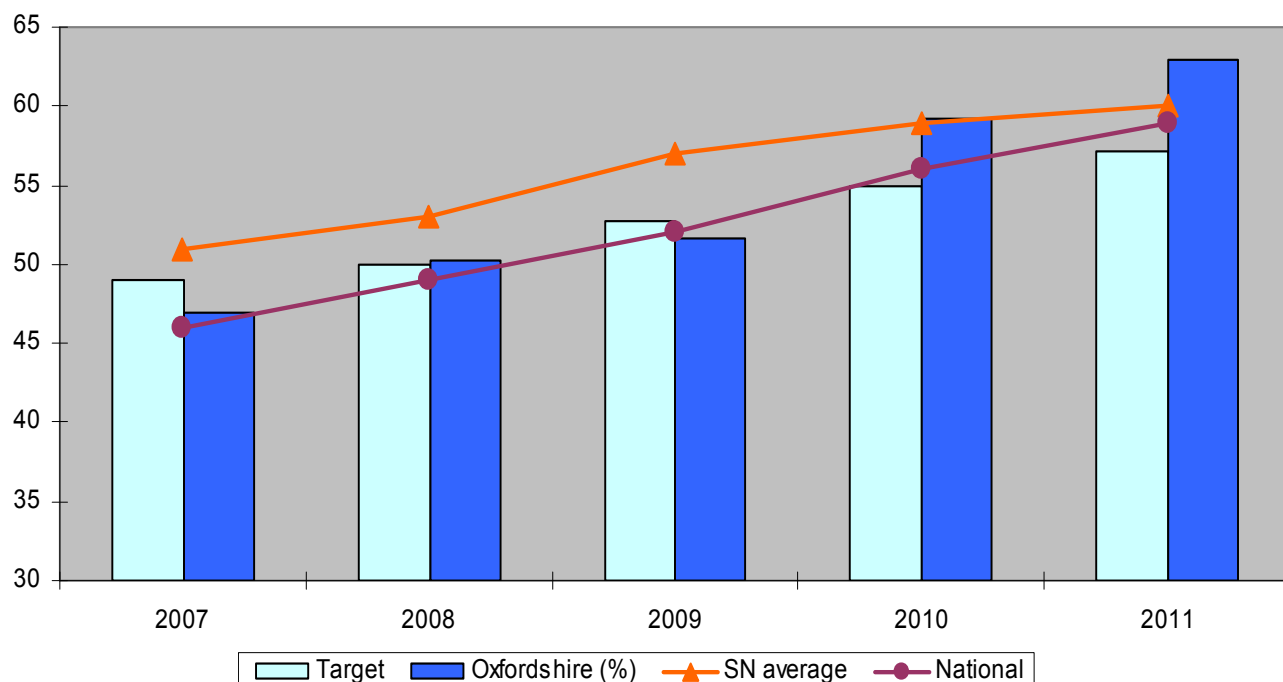


**OXFORDSHIRE  
COUNTY COUNCIL**

[www.oxfordshire.gov.uk](http://www.oxfordshire.gov.uk)

# Early Years Foundation Stage Profile

EYFSP - % attaining 78+ points including 6+ in PSED and CLL

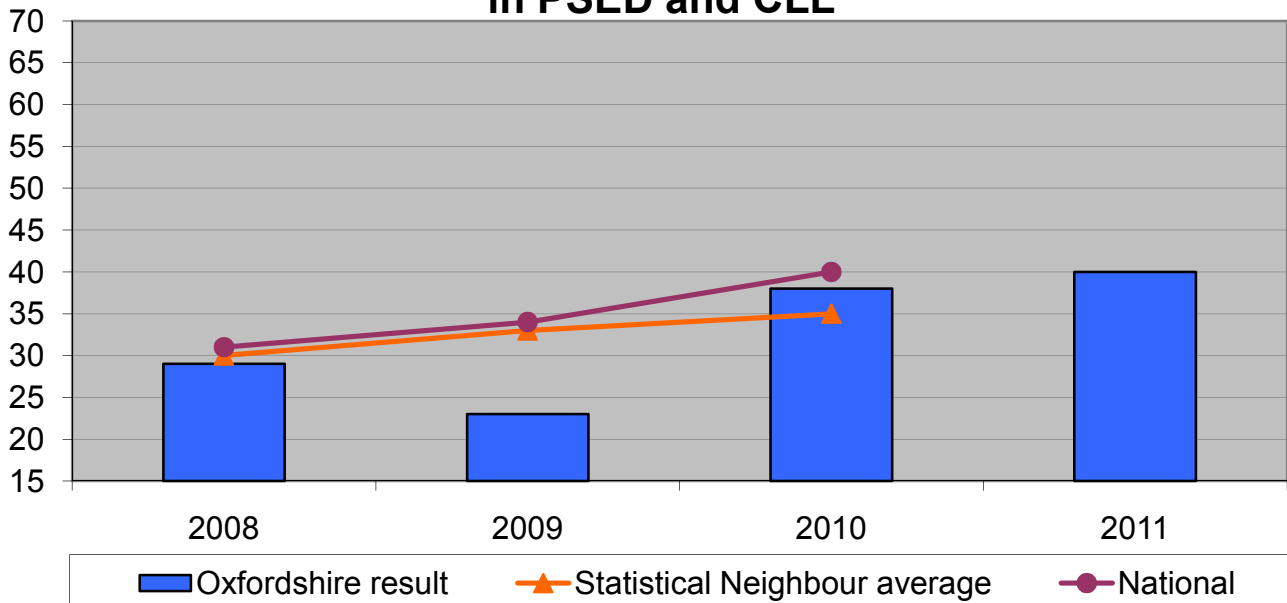


EYFSP - % attaining 78+ points including 6+ in PSED and CLL

	2007	2008	2009	2010	2011
Oxfordshire target	49	50	53	55	57
Oxfordshire result	47	50	52	59	63
Cohort	6237	6843	6731	6946	7181
Statistical Neighbour average	51	53	57	59	60
National	46	49	52	56	59

# Early Years Foundation Stage Profile Free School Meals

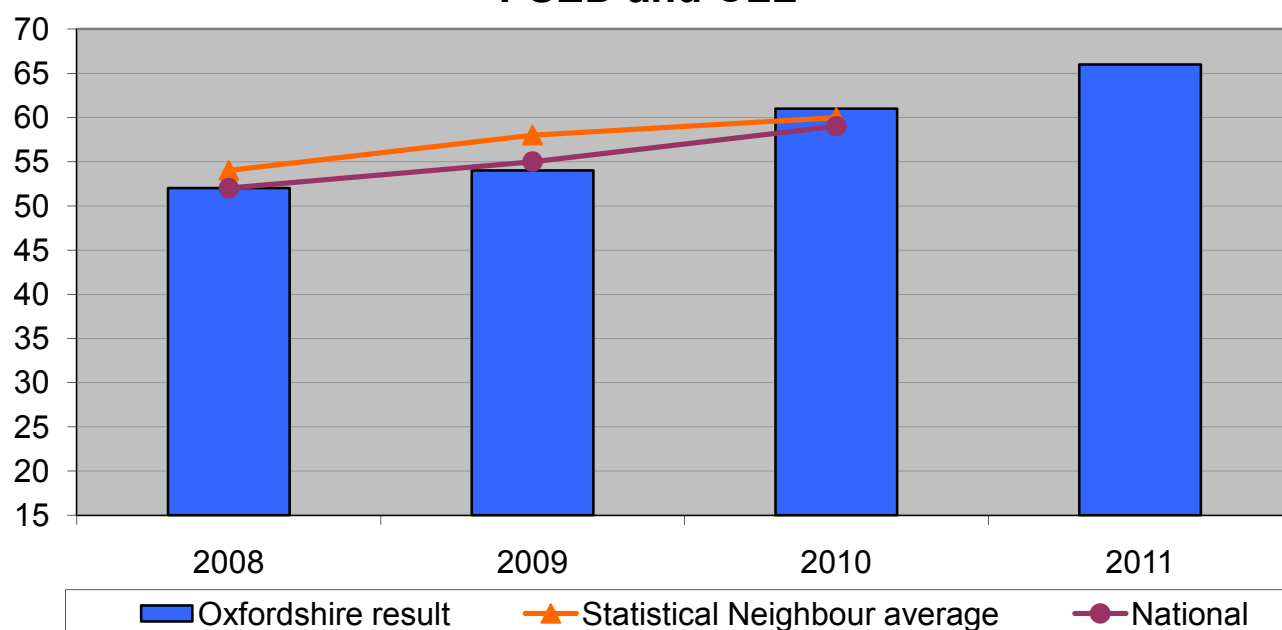
**FSM: EYFSP - % 78+points including 6+  
in PSED and CLL**



FSM	EYFSP - % attaining 78+ points including 6+ in PSED and CLL				
	2007	2008	2009	2010	2011
<b>Oxfordshire result</b>		<b>29</b>	<b>23</b>	<b>38</b>	<b>40</b>
Cohort		429	559	681	821
Statistical Neighbour average		30	33	35	
National		31	34	40	

# Early Years Foundation Stage Profile Non Free School Meals

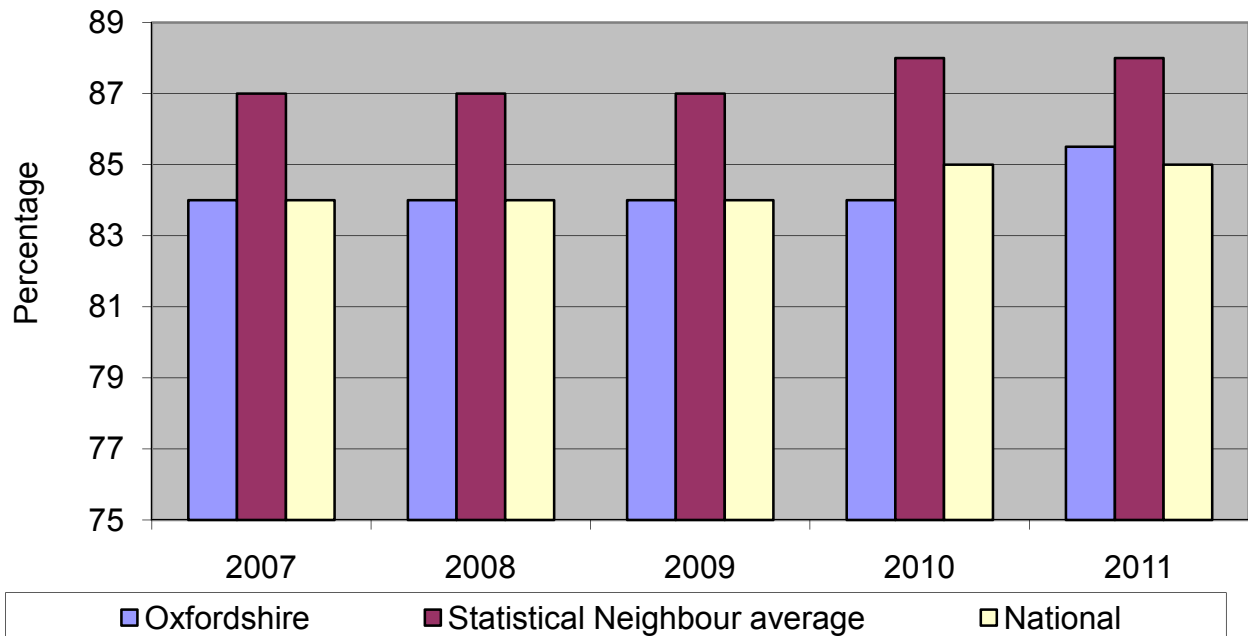
**Non-FSM: EYFSP - % 78+points including 6+ in PSED and CLL**



Non-FSM	EYFSP - % attaining 78+ points including 6+ in PSED and CLL				
	2007	2008	2009	2010	2011
<b>Oxfordshire result</b>		<b>52</b>	<b>54</b>	<b>61</b>	<b>66</b>
Cohort		6057	6096	6202	6360
Statistical Neighbour average		54	58	60	
National		52	55	59	

# Key Stage 1 - Reading

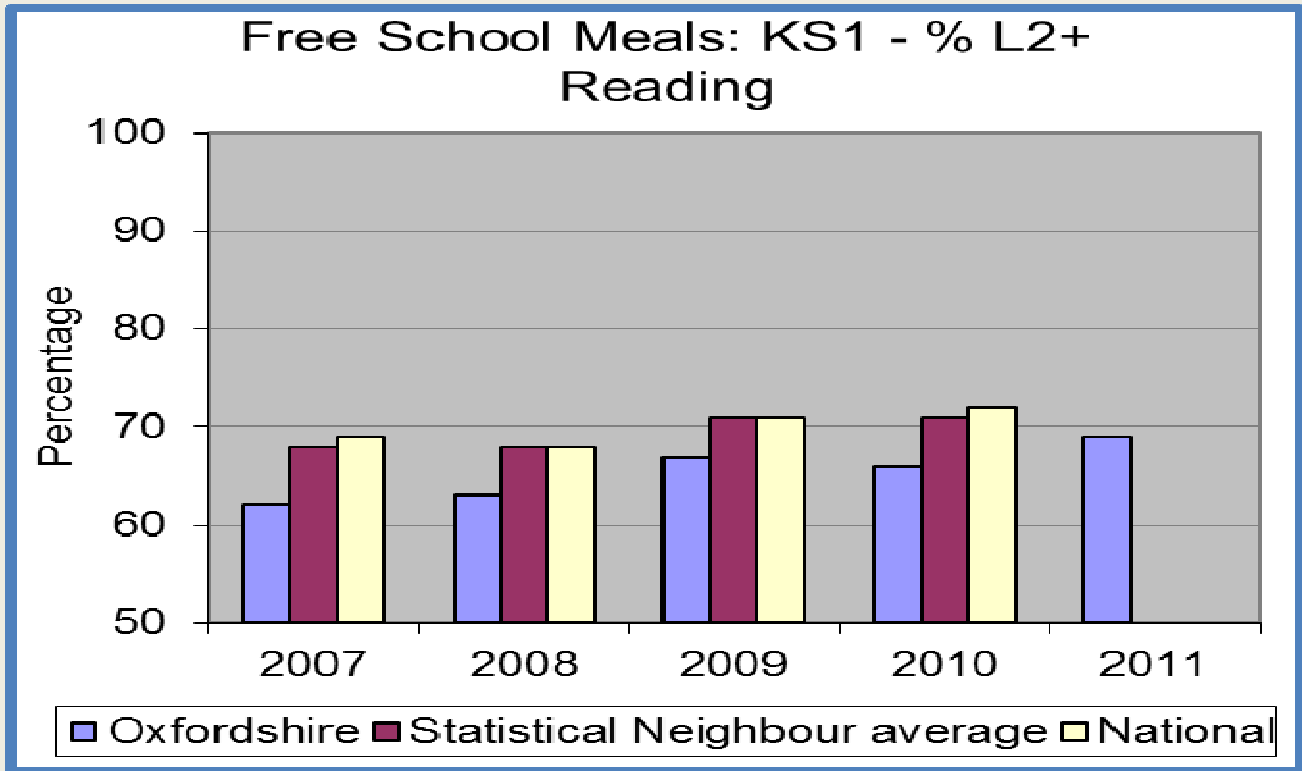
**KS1 - % attaining L2+ Reading**



**KS1 - Reading % attaining L2+**

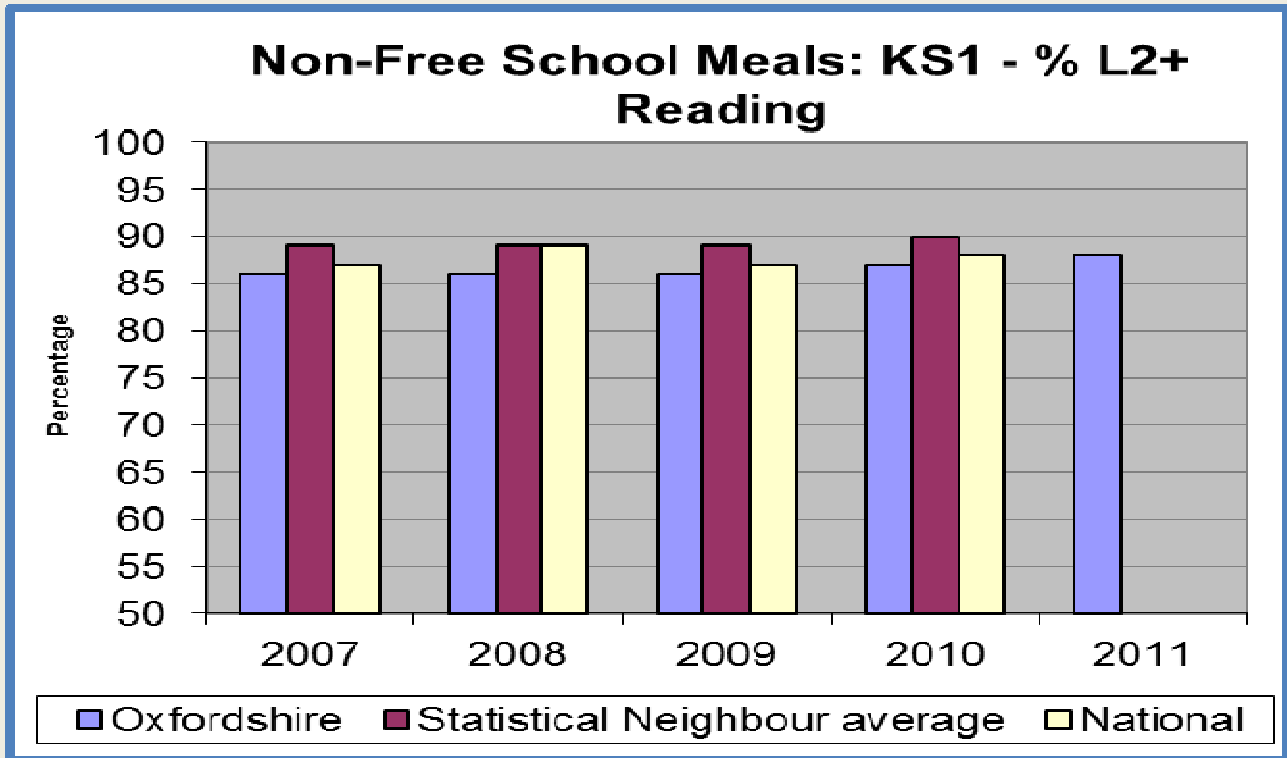
	2007	2008	2009	2010	2011
<b>Oxfordshire</b>	<b>84</b>	<b>84</b>	<b>84</b>	<b>84</b>	<b>85.5</b>
Cohort	6394	6305	6265	6635	6757
Statistical Neighbour average	87	87	87	88	88.0
National	84	84	84	85	85

## Key Stage 1 – Reading Free School Meals



FSM	KS1 - Reading % attaining L2+				
	2007	2008	2009	2010	2011
<b>Oxfordshire</b>	<b>62</b>	<b>63</b>	<b>67</b>	<b>66</b>	<b>69</b>
Cohort	626	646	627	741	853
Statistical Neighbourhood average	68	68	71	71	
National	69	68	71	72	

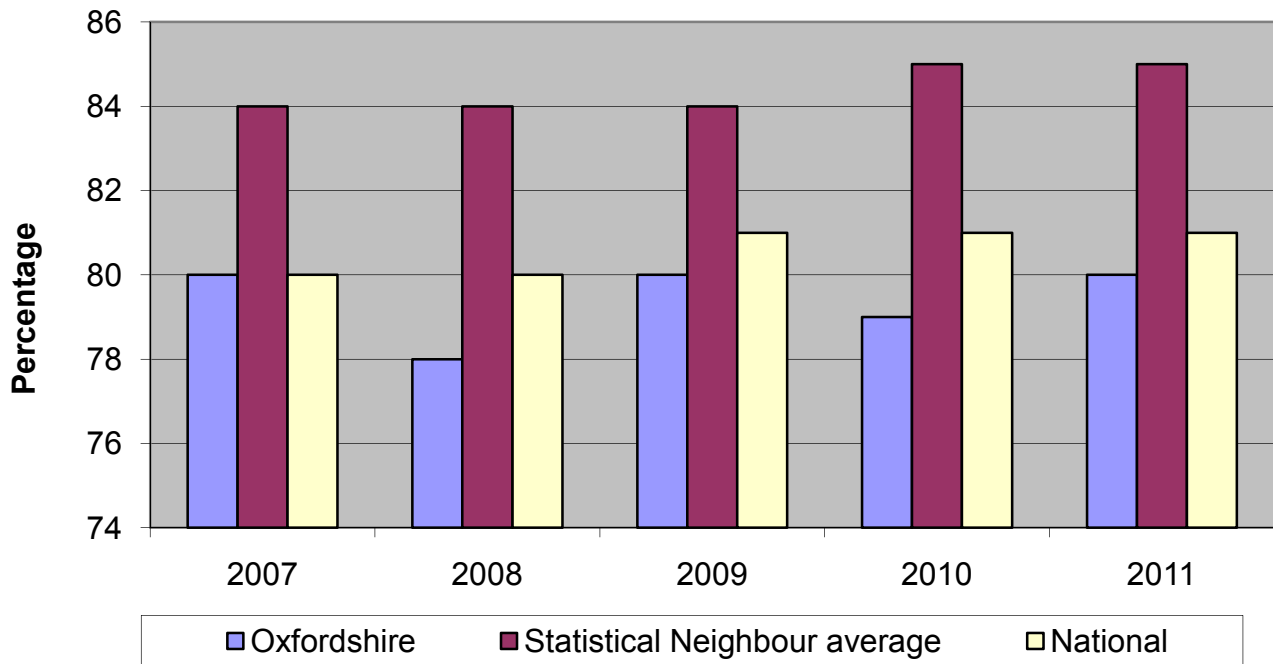
# Key Stage 1 – Reading Non-Free School Meals



Non-FSM	KS1 - Reading % attaining L2+				
	2007	2008	2009	2010	2011
<b>Oxfordshire</b>	<b>86</b>	<b>86</b>	<b>86</b>	<b>87</b>	<b>88</b>
Cohort	5737	5617	5592	5865	5904
Statistical Neighbour average	89	89	89	90	
National	87	89	87	88	

# Key Stage 1 - Writing

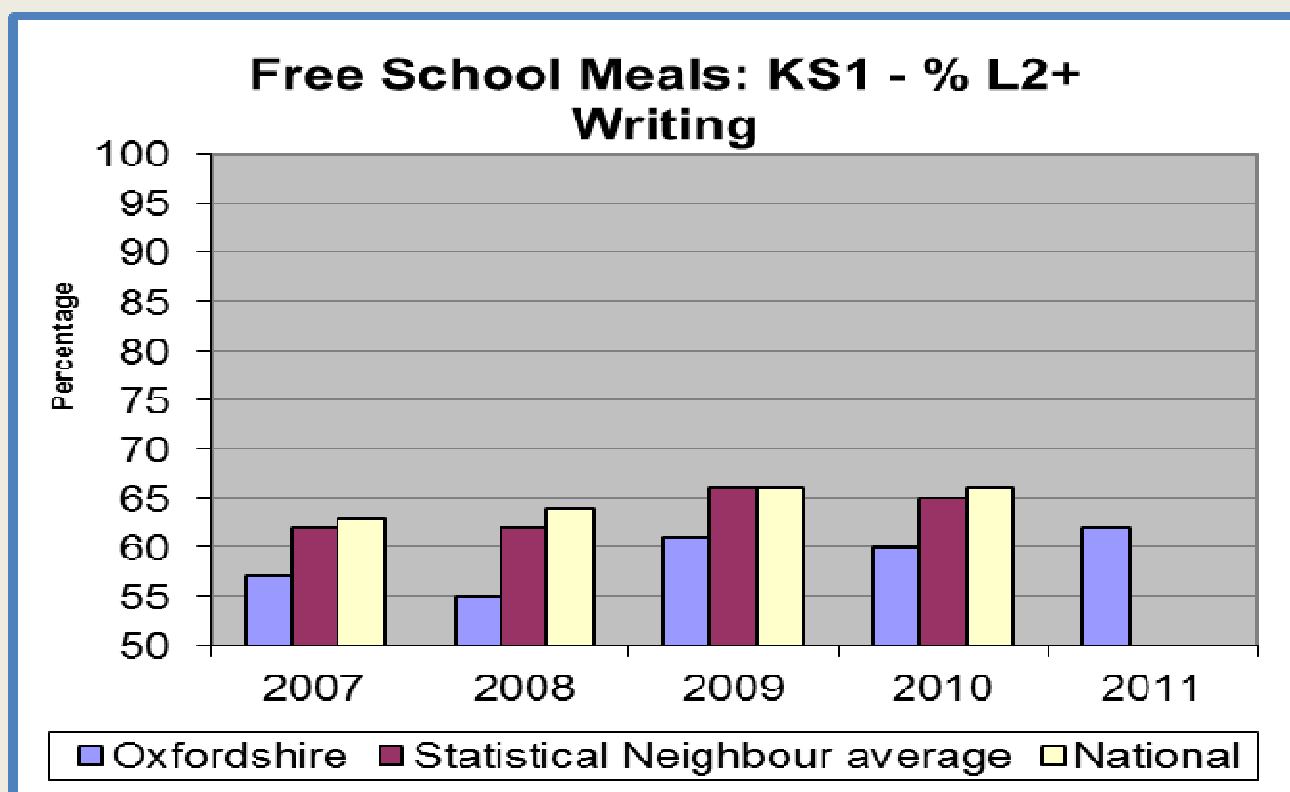
KS1 - % attaining L2+ Writing



	KS1 - Writing % attaining L2+				
	2007	2008	2009	2010	2011
<b>Oxfordshire</b>	<b>80</b>	<b>78</b>	<b>80</b>	<b>79</b>	<b>80</b>
Cohort	6394	6305	6265	6635	6757
Statistical Neighbour average	84	84	84	85	85
National	80	80	81	81	81

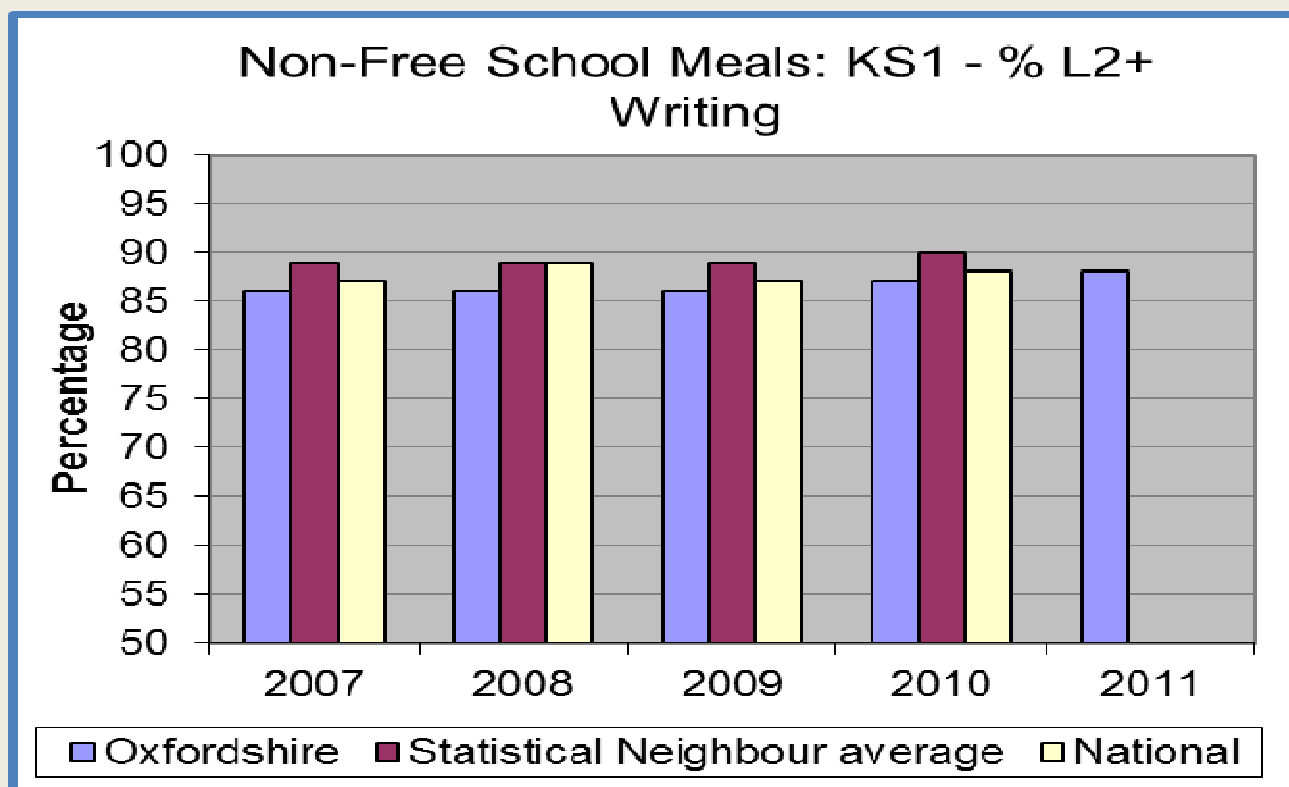


## Key Stage 1 – Writing Free School Meals



FSM	KS1 - Writing % attaining L2+				
	2007	2008	2009	2010	2011
<b>Oxfordshire</b>	<b>57</b>	<b>55</b>	<b>61</b>	<b>60</b>	<b>62</b>
Cohort	626	646	627	741	853
Statistical Neighbour average	62	62	66	65	
National	63	64	66	66	

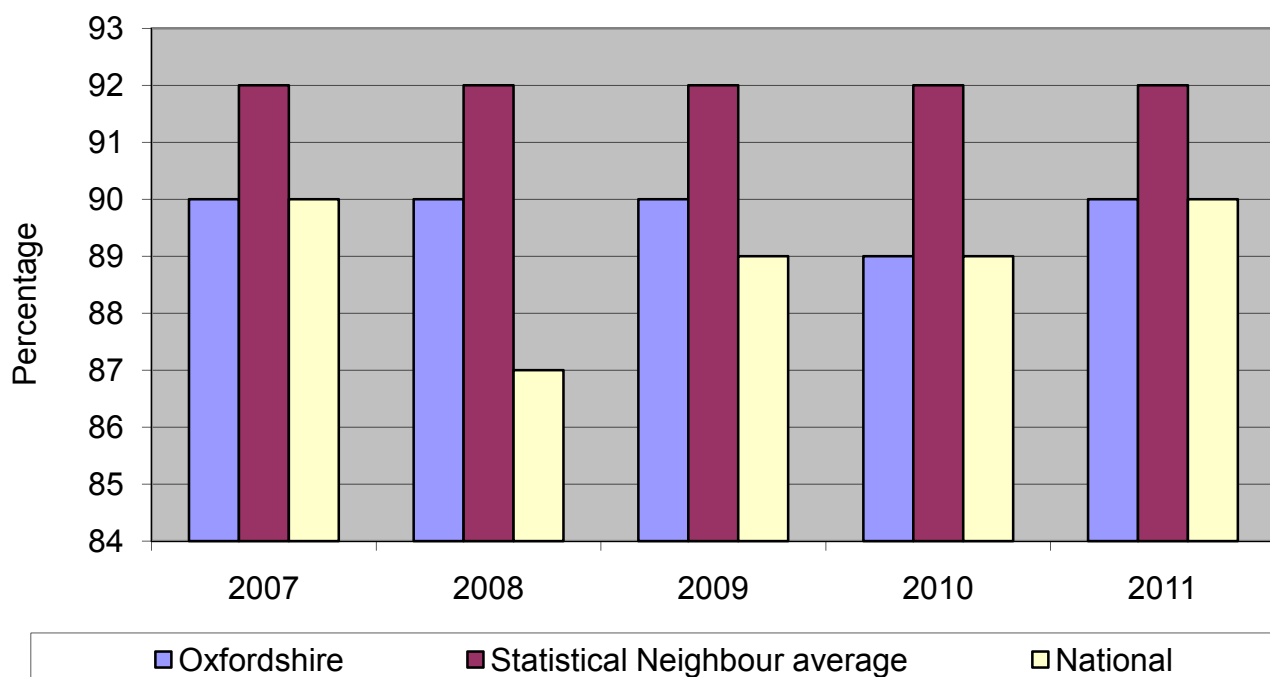
## Key Stage 1 – Writing Non-Free School Meals



Non-FSM	KS1 - Writing % attaining L2+				
	2007	2008	2009	2010	2011
<b>Oxfordshire</b>	<b>83</b>	<b>81</b>	<b>83</b>	<b>82</b>	<b>83</b>
Cohort	5737	5617	5592	5865	5904
Statistical Neighbour average	87	86	87	87	
National	84	84	84	85	

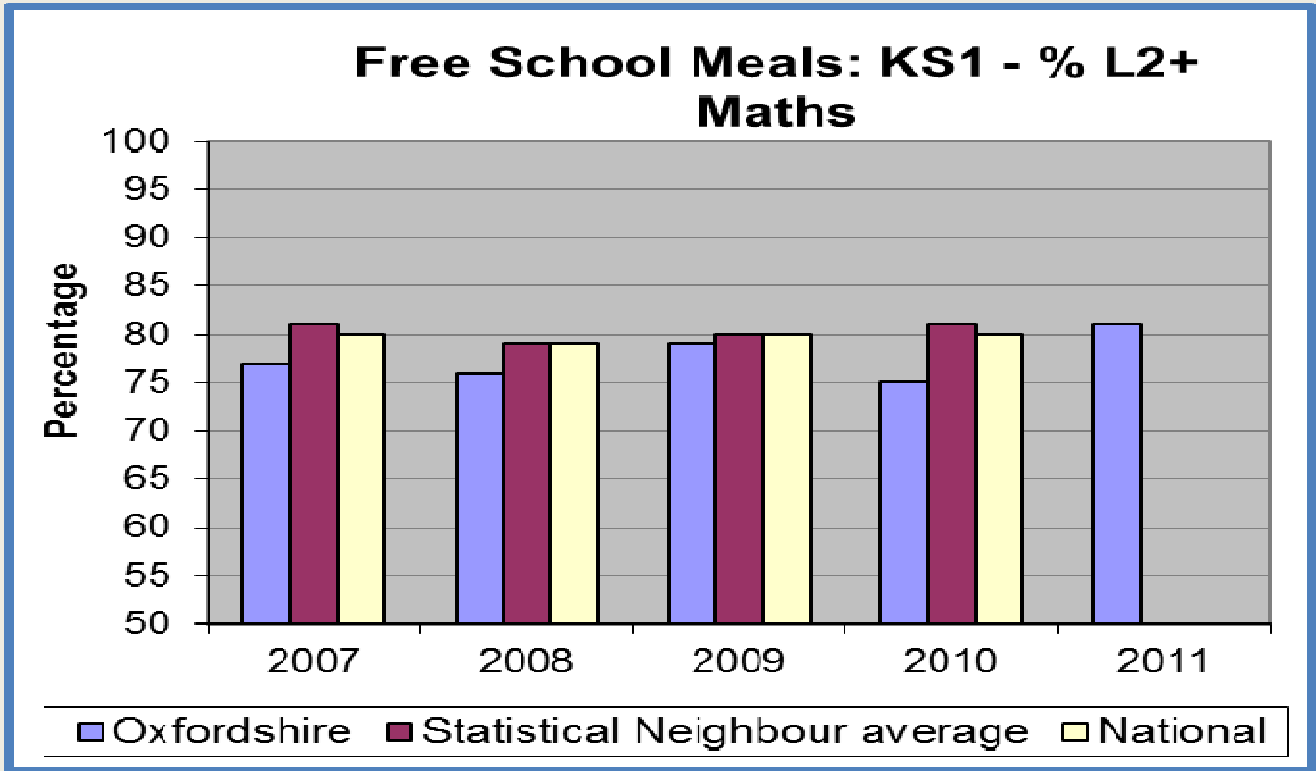
# Key Stage 1 - Maths

KS1 - % attaining L2+ maths



	KS1 - maths % attaining L2+				
	2007	2008	2009	2010	2011
<b>Oxfordshire</b>	<b>90</b>	<b>90</b>	<b>90</b>	<b>89</b>	<b>90</b>
Cohort	6394	6305	6265	6635	6757
Statistical Neighbour average	92	92	92	92	92
National	90	87	89	89	90

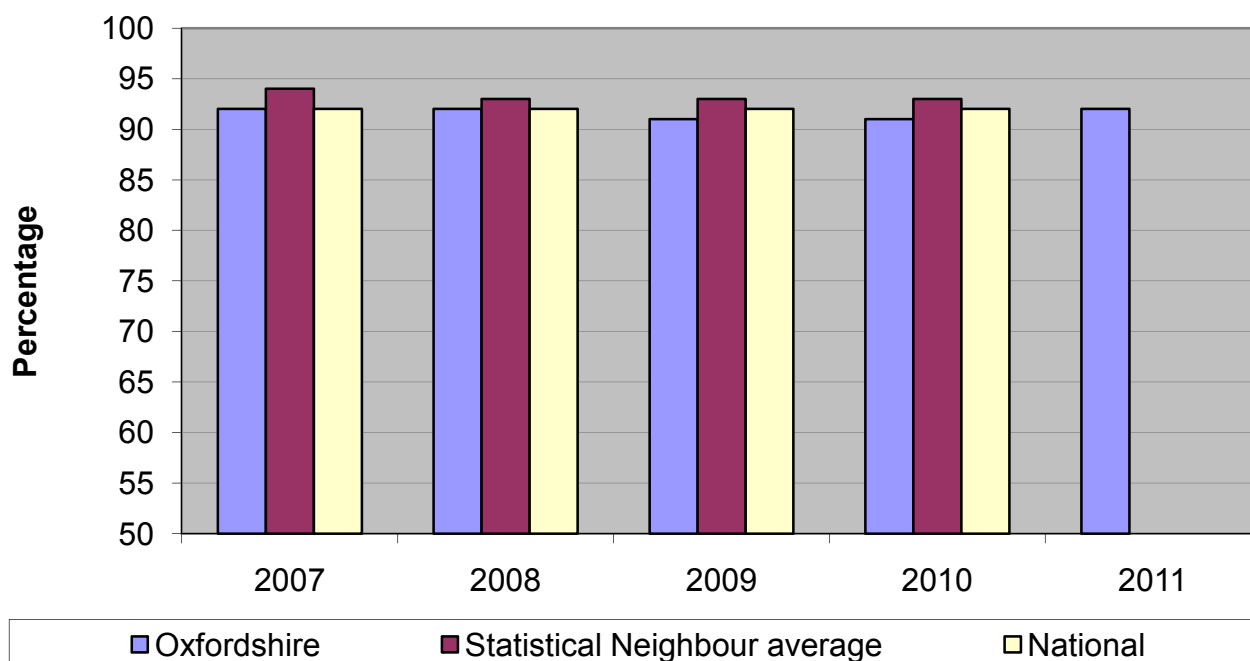
## Key Stage 1 – Maths Free School Meals



FSM	KS1 - maths % attaining L2+				
	2007	2008	2009	2010	2011
<b>Oxfordshire</b>	<b>77</b>	<b>76</b>	<b>79</b>	<b>75</b>	<b>81</b>
Cohort	626	646	627	741	853
Statistical Neighbour average	81	79	80	81	
National	80	79	80	80	

# Key Stage 1 – Maths Non-Free School Meals

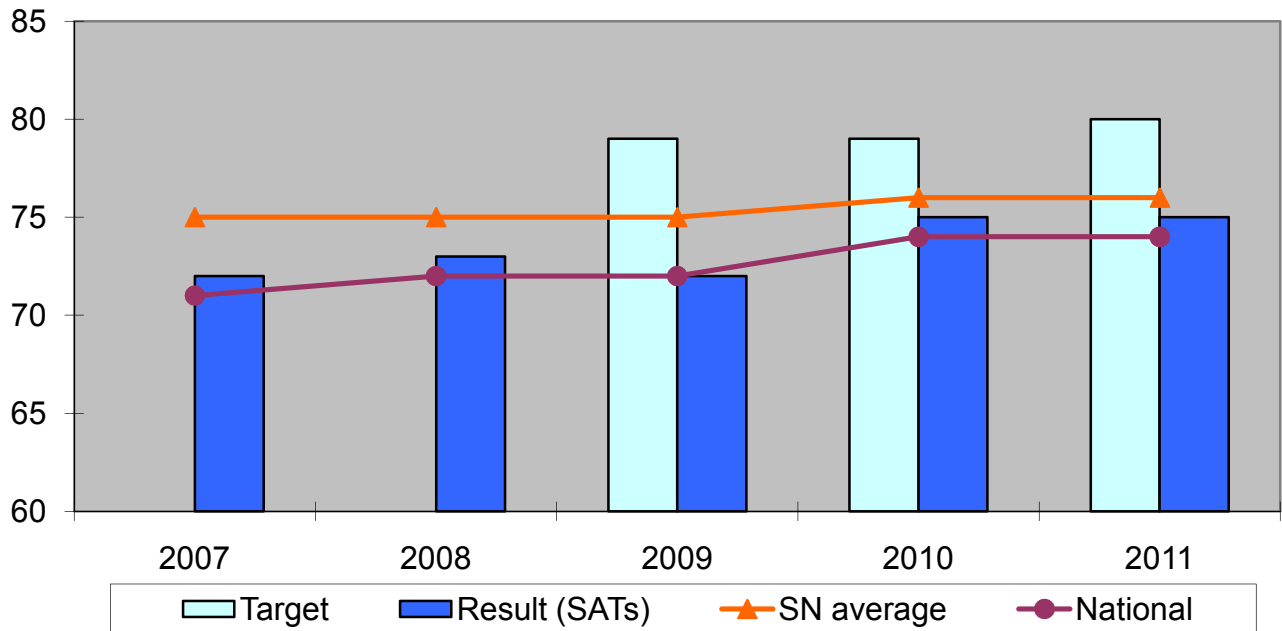
**Non-Free School Meals: KS1 - % L2+ Maths**



Non-FSM	KS1 - maths % attaining L2+				
	2007	2008	2009	2010	2011
<b>Oxfordshire</b>	<b>92</b>	<b>92</b>	<b>91</b>	<b>91</b>	<b>92</b>
Cohort	5737	5617	5592	5865	5904
Statistical Neighbour average	94	93	93	93	
National	92	92	92	92	

# Key Stage 2

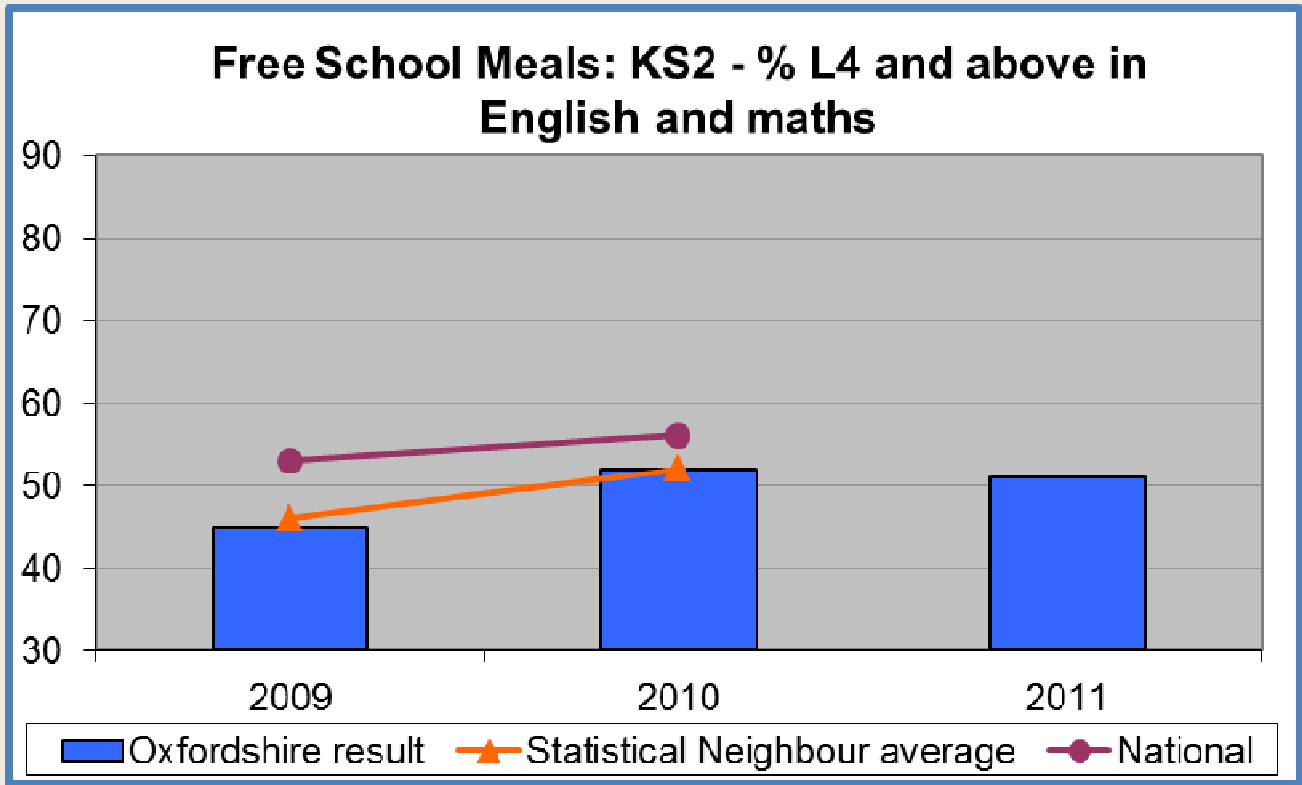
**Key Stage 2 - % attaining Level 4 and above in English and maths**



**KS2 - % attaining Level 4 and above in English and maths**

	2007	2008	2009	2010	2011
Oxfordshire target			79	79	80
<b>Oxfordshire result</b>	<b>72</b>	<b>73</b>	<b>72</b>	<b>75</b>	<b>75</b>
Cohort	6100	6434	6287	4976	6100
Statistical Neighbour average	75	75	75	76	76
National	71	72	72	74	74

# Key Stage 2 Free School Meals

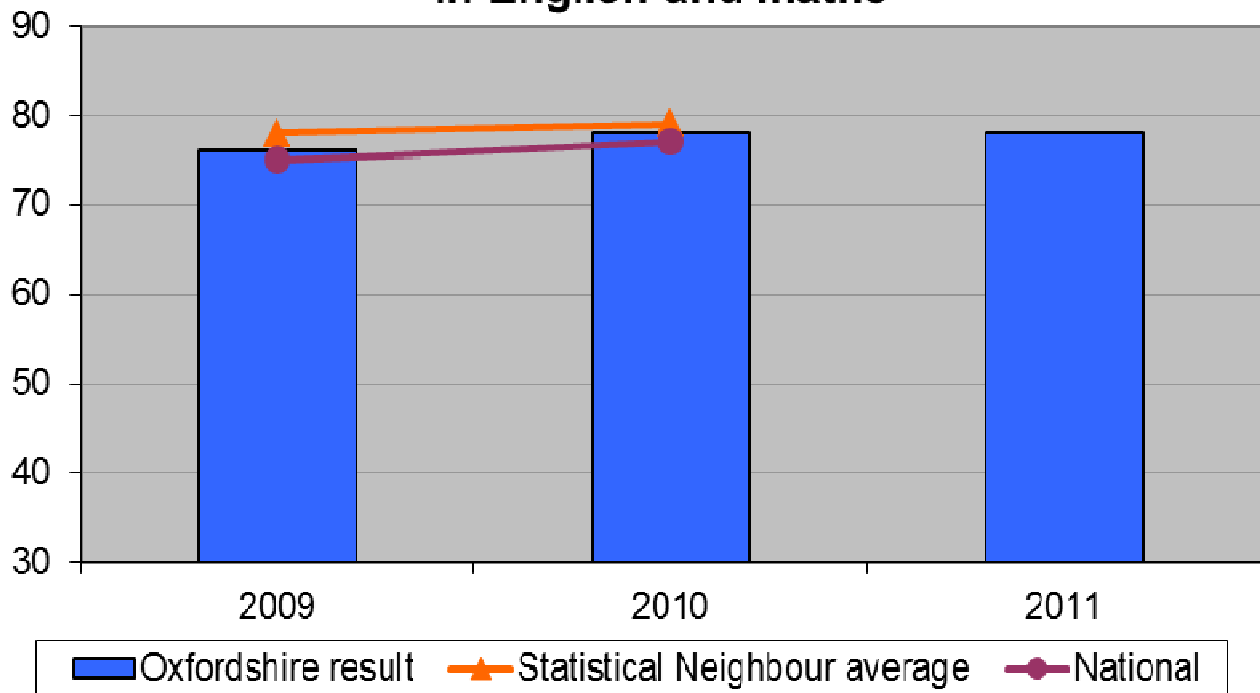


FSM	KS2 - % attaining Level 4 and above in English and maths				
	2007	2008	2009	2010	2011
<b>Oxfordshire result</b>			<b>45</b>	<b>52</b>	<b>51</b>
Cohort			647	483	725
Statistical			46	52	
National			53	56	

# Key Stage 2

## Non-Free School Meals

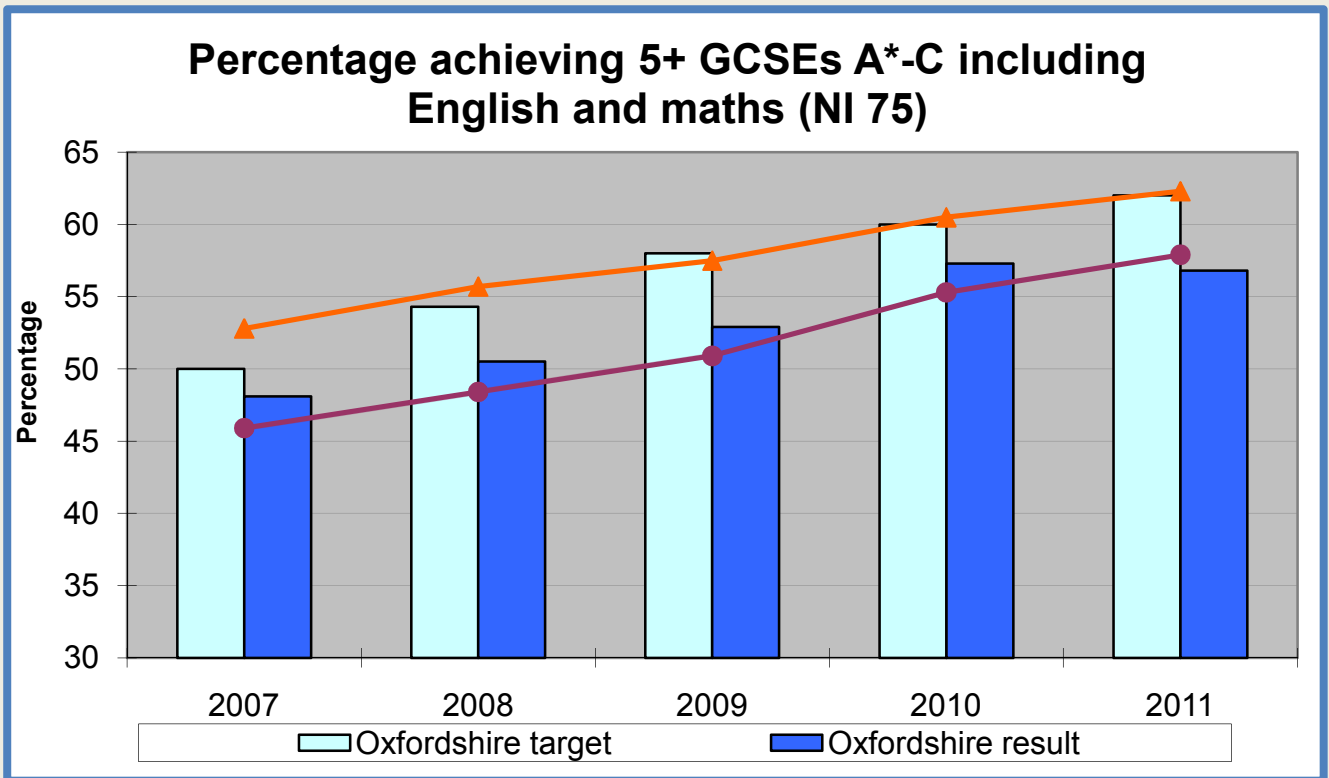
**Non-Free School Meals: KS2 - % L4 and above in English and maths**



Non-FSM	KS2 - % attaining Level 4 and above in English and maths				
	2007	2008	2009	2010	2011
<b>Oxfordshire result</b>			<b>76</b>	<b>78</b>	<b>78</b>
Cohort			5648	4485	5423
Statistical			78	79	
National			75	77	



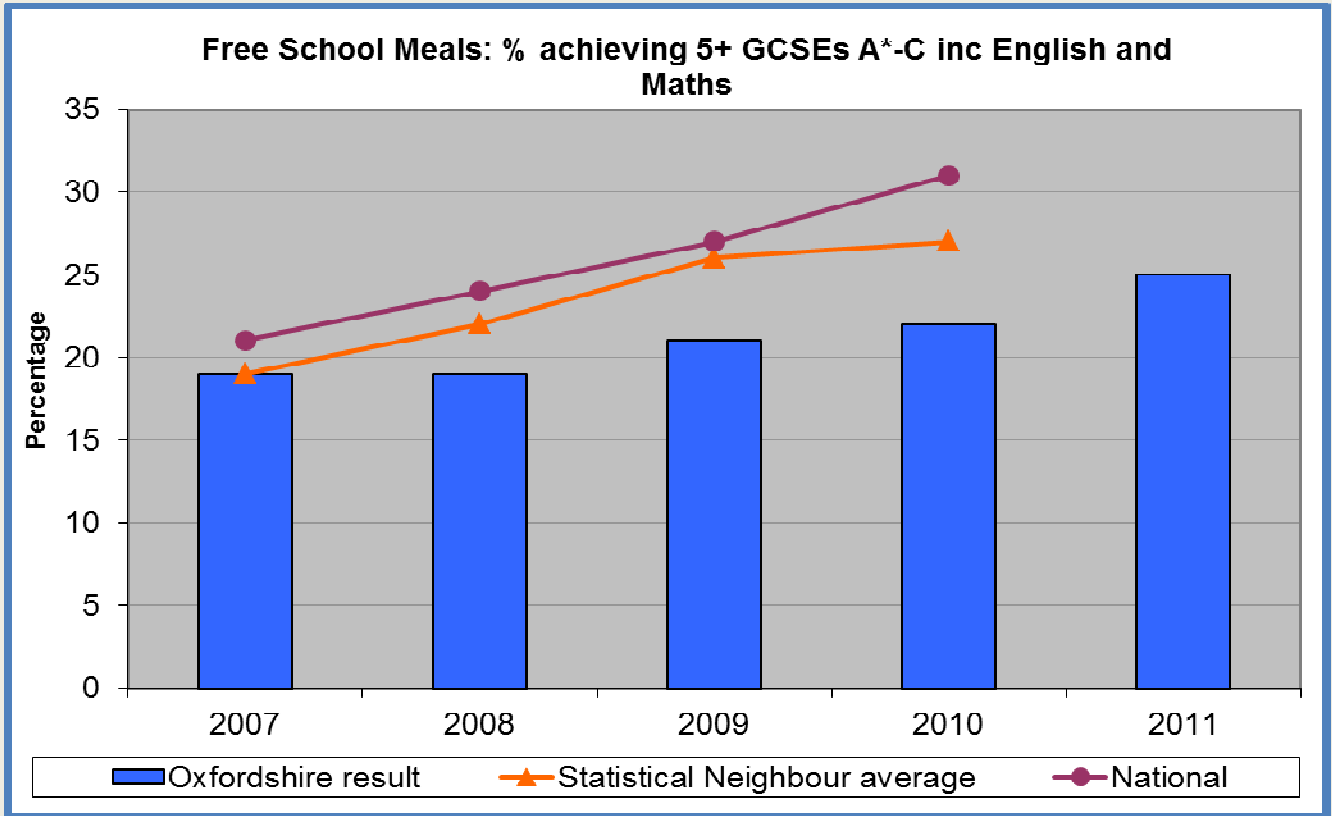
# Key Stage 4



## % attaining 5+ GCSEs A\*-C inc Eng and maths

	2007	2008	2009	2010	2011
Oxfordshire target	50	54	58	60	62
<b>Oxfordshire result</b>	<b>48.1</b>	<b>50.5</b>	<b>52.9</b>	<b>57.3</b>	<b>56.8</b>
Cohort	6565	6656	6309	6371	6200
Statistical Neighbour average	53	56	58	61	62
National	46	48	51	55	58

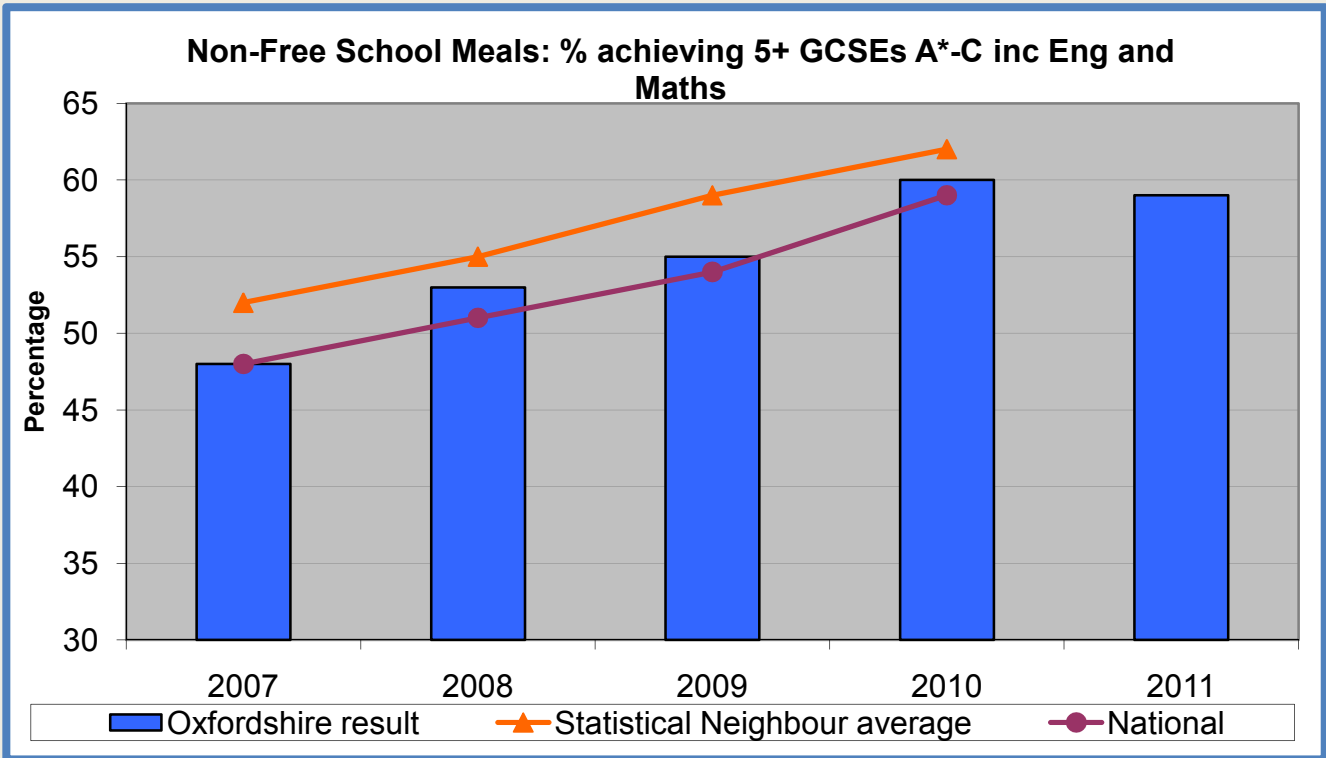
# Key Stage 4 Free School Meals



FSM	% attaining 5+ GCSEs A*-C inc Eng & maths				
	2007	2008	2009	2010	2011
<b>Oxfordshire result</b>	<b>19</b>	<b>19</b>	<b>21</b>	<b>22</b>	<b>25</b>
Cohort	463	434	437	468	481
Statistical Neighbour average	19	22	26	27	
National	21	24	27	31	

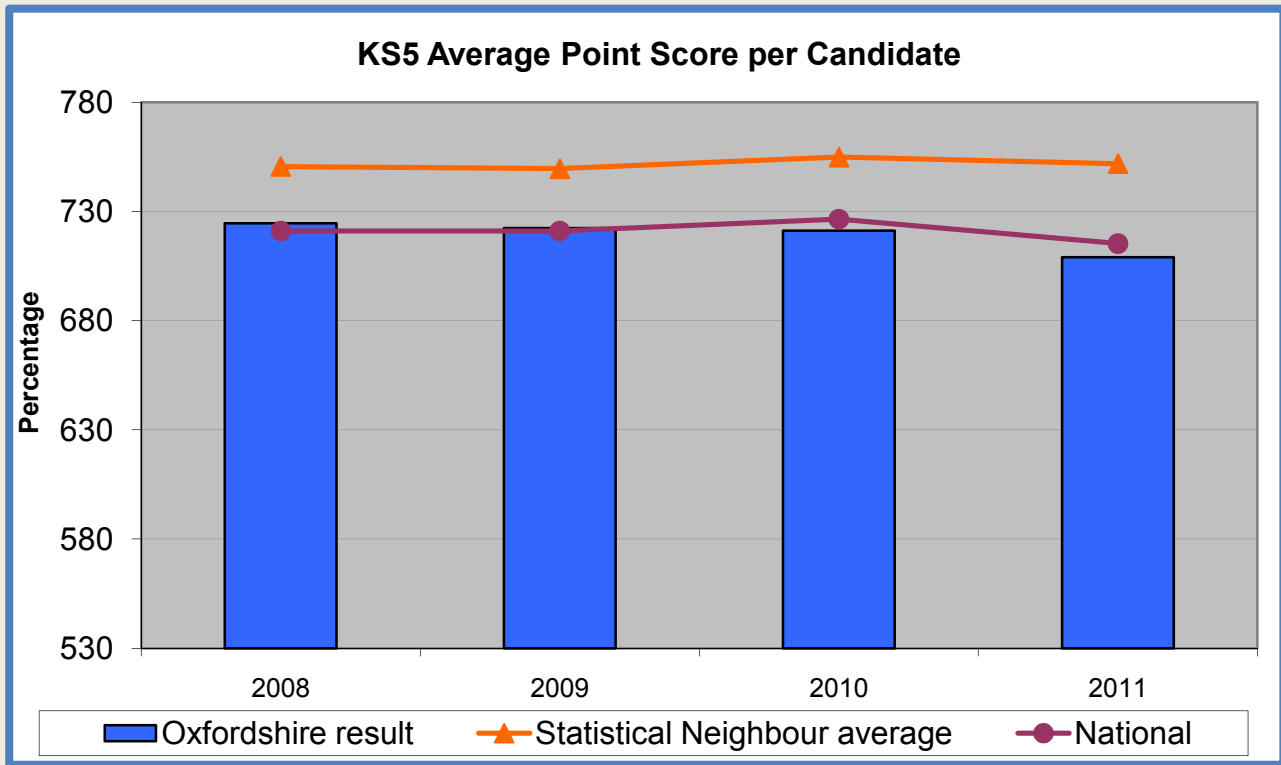
# Key Stage 4

## Non-Free School Meals



Non-FSM	% attaining 5+ GCSEs A*-C inc Eng & maths				
	2007	2008	2009	2010	2011
<b>Oxfordshire result</b>	<b>48</b>	<b>53</b>	<b>55</b>	<b>60</b>	<b>59</b>
Cohort	6121	6244	5804	5921	5749
Statistical Neighbour average	52	55	59	62	
National	48	51	54	59	

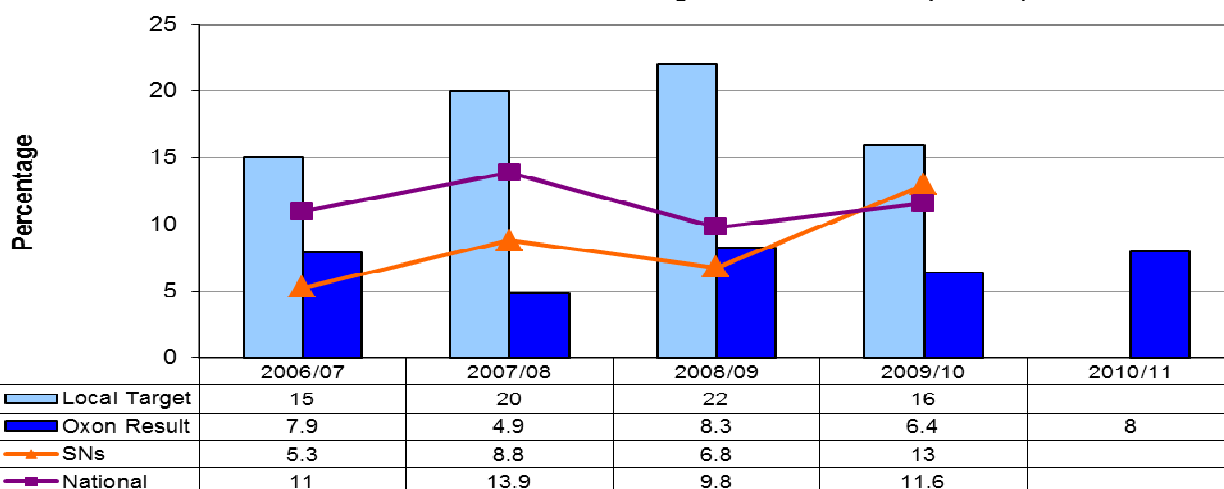
# Key Stage 5



	Average point score (per candidate)			
	2008	2009	2010	2011
<b>Oxfordshire result</b>	<b>724.6</b>	<b>722.4</b>	<b>721.3</b>	<b>709</b>
Cohort	3696	3877	4308	4370
Statistical Neighbour average	751	750	755	752
National	721	721	727	715

# Looked After Children

LAC GCSEs: 5+ A\*-C inc. English and maths (NI101)



Oxfordshire underlying figures	3/38	2/41	4/48	3/47	5/50
--------------------------------	------	------	------	------	------

Note: different cohort from 2009/10 onwards so not directly comparable with previous years (see text for details). For 2009/10 SN comparison data has some authorities' data suppressed due to low pupil numbers.

## New definition OC2 cohort

Oxon	2006/07	2007/08	2008/09	2009/10	2010/11
<b>Cohort Size</b>	38	41	48	47	Yes
% Any pass					86.0
% 1+ A*-G		56.1	68.8	66	76.0
% 5+ A*-G		39	52.1	55.3	54.0
% 5+ A*-G EM				40.4	50.0
% 5+ A*-C			16.7	23.4	18.0
% 5+ A*-C EM	7.9	4.9	8.3	6.4	8.0
% 5+ A*-C EM target	15	20	22	16	

SN Mean	2006/07	2007/08	2008/09	2009/10	2010/11
<b>Cohort Size</b>					
% Any pass				74	
% 1+ A*-G				69	
% 5+ A*-G				47	
% 5+ A*-G EM					
% 5+ A*-C				25	
% 5+ A*-C EM	5.3	8.8	6.8	13	

National	2006/07	2007/08	2008/09	2009/10	2010/11
<b>Cohort Size</b>					
% Any pass				78	
% 1+ A*-G				72.5	
% 5+ A*-G				50.6	
% 5+ A*-G EM					
% 5+ A*-C				26.1	
% 5+ A*-C EM	11	13.9	9.8	11.6	

# Key Stage Results By Hub Area

GCSE 2011 Provisional		
	Cohort	5 A*-C incl English and maths %
Central	1277	54.1
North	2303	57.5
South	2500	60.5

KS2 2011 Provisional				
	Cohort	English	Maths	English +Maths
		% pupils attaining Level 4+		
Central	1390	76.8	74.0	67.6
North	2527	83.7	81.8	75.9
South	2231	84.5	83.5	78.0

KS1 2011 Provisional				
		% pupils attaining Level 2+		
School	Cohort	Reading	Writing	Maths
Central	1651	79.5	74.3	86.7
North	2714	87.0	81.5	91.9
South	2361	87.9	82.6	91.0